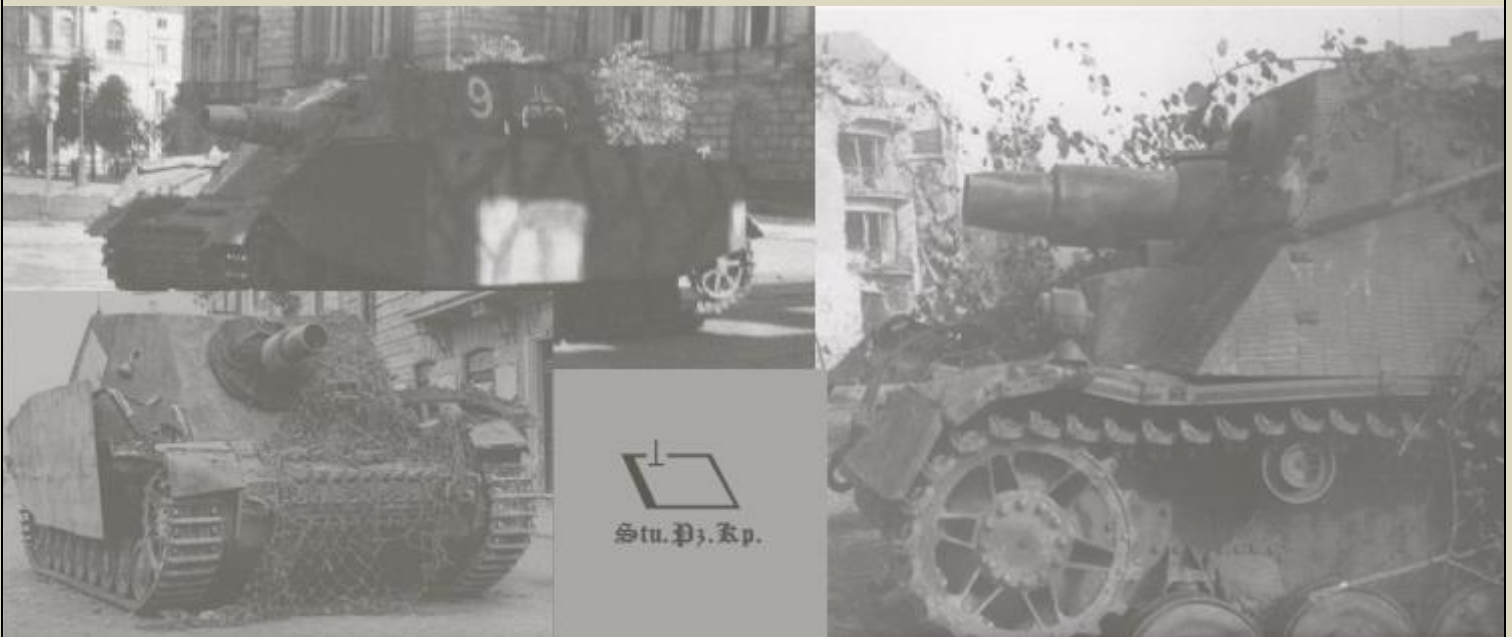


US MILITARY INTELLIGENCE REPORT

[Sd.Kfz.250/9]



HEADQUARTERS
COMMUNICATION ZONE, ETOUSA (FORWARD)
OFFICE OF THE CHIEF ORDNANCE OFFICE
APO 887

ETO ORDNANCE TECHNICAL INTELLIGENCE BULETIN #27

6 October, 1944.

Section I – Pz.Kpf. Wg.II Model L Tank (German)

Observations by 1st Lieut. George D. Drury, Ordnance Technical Intelligence Unit "E" attached to HQ First United States Army:

II. 2 cm Half-Tracked Armored Care (Sd.Kfz. 250/9):

1. The subject vehicle was found in the village of St. Anne in Normandy. It had suffered the usual cannibalization so was not complete as regards radios, armament, sights front wheels etc.,
2. Vehicle designation as painted on the side was Sd.Kfz. 250/9. Provision was made in the turret for mounting a 2 cm Gun and a M.G. coaxial. The turret as mounted on this vehicle was six sided instead of ten sided as found on the vehicle reported on the AFHQ, Technical Intelligence Summary 31 dated 14 August 1944. Frontal armor on the turret was 30 mm. The turret top is open and is protected by a wire mesh anti-grenade screen similar to that on the turret of the standard 4 wheeled armored car Sd.Kfz.222.
3. Data as taken on the subject vehicle follows:

a. Type – 2 cm. Half-tracked Armored Car (Sd.Kfz. 250/9)

b. Identification Marks:

(1) Chassis Number	104372
(2) Maker's code	Isb
(3) Ufbau Number	2839
(4) Model Letter	Sd.Kfz. 250/9

c. Dimensions:

(1) Length	14 ft.	10 ins.
(2) Width	6 ft.	4 ins.
(3) Height (screen closed over turret)	6 ft.	4 ins.
(4) Length supstr. top	6 ft.	6 ½ ins.
(5) Length supstr. Bottom	7 ft.	4 ins.
(6) Length engine top plate	5 ft.	9 ins.
(7) Width of top of engine frontal armor	4 ft.	3 ins.
(8) Width of bottom of engine frontal armor	2 ft.	4 ins.
(9) Length of engine frontal armor	2 ft.	2 ¼ ins.
(10) Width supstr. top	4 ft.	8 ½ ins.
(11) Width turret base	5 ft.	1 ins.
(12) Width turret top	3 ft.	9 ¼ ins.
(13) Length turret bottom	6 ft.	1 ½ ins.
(14) Length turret top	4 ft.	8 ins.

d. Armor:

(1) Turret

	<u>Thickness:</u>	<u>Angle:</u>
Front	30 mm	40°
Sides	9 mm	35°
Rear	9 mm	40°

(2) <u>Superstructure:</u>	Thickness:	Angle:
Front	13 mm	31°
Sides	9 mm	35°
Rear	10 mm	10°

(3) <u>Hull:</u>		
Nose plate	14mm	30°
Sides	9mm	30°
Plate over engine	5 mm	
Tail plate	10mm	10°

e. Armament:

This had all been removed before examination, but it was presumed that this consisted of the 2 cm. Kw.K. 38 with a 7.92 M.G. 34 coaxial as listed in the report from Italy.

Traverse – 360° hand power. Maximum elevation 49°.

f. Sighting: Sights had been removed before examination.

g. Ammunition:

All ammunition had been removed but it was presumed to be ordinary 2 cm.

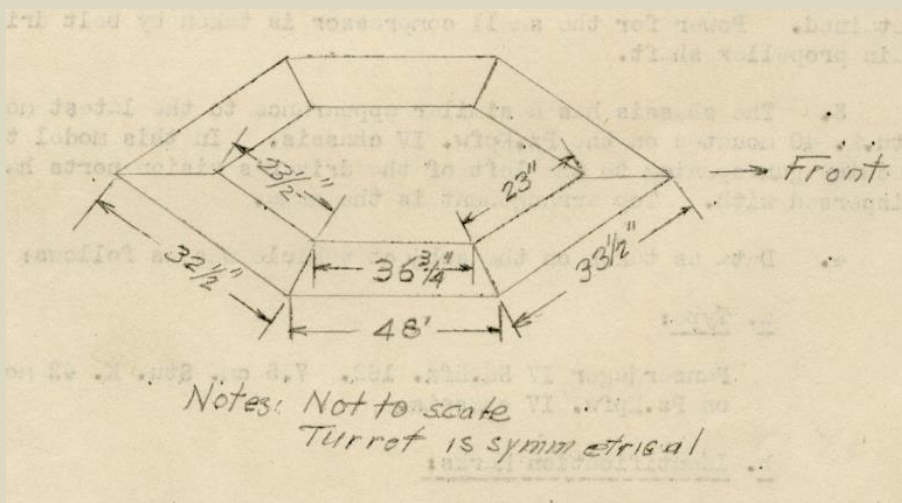
h. Remarks: Chassis was the normal Sd.Kfz. 250/1

All armament is controlled by on man who sits in the seat which is swung from the right rear of the turret. Immediately in front of him is the traversing wheel. This wheel slides on its shaft and by pushing it either forward or backward, elevation and depression of the gun is attained. The firing handle for the 2 cm. is on the right rear of this wheel with the firing handle for the M.G. on the left rear. When not in use, the gun can be locked in a horizontal position by a small lever immediately under the right trunion. Counterbalance is maintained by spring equilibrators one mounted on each side.

Markings as painted on the left side of the vehicle were as follows:

Kfz.	Sd.Kfz. 250/9
Leergewicht:	5.63 to
Nutzlast:	
Anhangerlast:	1 to
Vo. Kl:	II

Following is a sketch of the turret looking down from the top:



4. Six photographs of the vehicle are attached as Appendix "B"
 1. Front view of turret on 2 cm. armored car Sd.Kfz. 250/9
 2. Left front $\frac{3}{4}$ view of 2 cm. on armored car Sd. Kfz. 250/9
 3. Rear view of armored car mounting 2 cm. Sd. Kfz. 250/9
 4. Looking down on front of turret on 2 cm. armored car Sd.Kfz. 250/9
 5. Top view of turret on Sd.Kfz. 250/9 showing mounting for 2 cm. gun and M.G.
 6. Top view of turret on Sd.Kfz. 250/9 showing mounting for 2 cm. gun and controls for traversing and firing of both 2 cm. and M.G.

